

Health Statistics and Resources for Kansas

This list is a compilation of sources for statistical information and resources to support community health assessment and health improvement planning. The Kansas Department of Health and Environment (KDHE) Bureau of Epidemiology and Public Health Informatics (BEPHI) compiled this document as part of the Kansas Health Matters (KHM). Many sites have information by county. A few of the sites aggregate data by Kansas Health Preparedness Region. This resource compilation has five parts:

- [Online Statistics and Query Tools](#) is a list of sites at which users can query data or select statistics for the state or county.
- [Static Reports and Publications](#) is a section that lists statistical reports and information, usually in PDF format.
- [Resources](#) is a section listing materials to help communities involved in community health assessment and health improvement planning.
- [Mapping Resources](#) is a list of sites that contain information that can be displayed on a map. Most sites can provide county level maps.

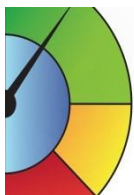
KDHE, BEPHI, and KHM make no warranty about the statistics and information available at these links. The listing of sources is in no particular order. Inclusion on the list is not an implied endorsement of any of other statistics and resource providers. This information is compiled in the spirit of sharing important resources that can be used in community health needs assessment and community health improvement planning for Kansas health departments, hospitals, and community organizations. Most resources are free to the user. Some may require registration. Links are subject to change. If you find broken links or have suggestions, email KDHE.HealthStatistics@ks.gov. [Click here to join our mailing list](#).

Online Statistics and Query Tools

These are websites in which the user can create custom tabulations, query specific data, or download actual data. User skills needed range from easy, moderate, to complex.

Kansas Health Matters	http://www.kansashealthmatters.org/	Dashboard tool to show statistics, trends and comparison between and among Kansas, counties, and health preparedness regions (KKHM Partnership)
Kansas Information for Communities (KIC)	http://kic.kdheks.gov/	General query tool enabling user to create statistical tables on public health data – (Main Page - KDHE)
KIC Death Query	http://kic.kdheks.gov/death_new.php	Mortality data (KDHE)
KIC Birth Query	http://kic.kdheks.gov/birth.php	Nativity data (KDHE)
KIC Pregnancy Query	http://kic.kdheks.gov/pregnancy_new.php	Pregnancy data (KDHE)
KIC Cancer Query	http://kic.kdheks.gov/cancer_new.php	Cancer incidence (KDHE)

Provided as a service of Kansas Health Matters and Kansas Information for Communities



KansasHealthMatters



KIC Hospital Discharge by Diagnosis (2015 and older)	http://kic.kdheks.gov/Nwhospa_newdgn.php	Hospital discharge by diagnosis (KDHE) (2015 and older)
KIC Hospital Discharge by Diagnosis (2016 and newer)	http://kic.kdheks.gov/Nwhospa_newdgn_2016Frwd.php#top	Hospital discharge by diagnosis (KDHE) (2016 and newer)
KIC Hospital Discharge by Procedure (2015 and older)	http://kic.kdheks.gov/Nwhospa_newprcd.php	Hospital discharge by procedure (KDHE) (2015 and older)
KIC Hospital Discharge by Procedure (2016 and newer)	http://kic.kdheks.gov/Nwhospa_newprcd_2016Frwd.php#top	Hospital discharge by procedure (KDHE) (2016 and newer)
KIC Population estimates	http://kic.kdheks.gov/poplneth_str.php	Kansas population estimates (KDHE)
KIC FastStats - Kansas K-12 Education Reports by County (clickable map)	http://kic.kdheks.gov/OHA/k12.html	The Kansas State Department of Education provides K-12 Education Reports by County, District, and school. Custom school-year reports can be created from data collected by the department. Reports contain information of school officials, attendance and dropouts. (KSDE)
KIC FastStats - Kansas Importance of the Health Care Sector to the Economy Reports (clickable map)	http://kic.kdheks.gov/OHA/ksuecon1.html	Kansas Rural Health Works at Kansas State University has prepared Importance of the Health Care Sector to the Economy reports for each Kansas county. (KSU)
KIC FastStats - County Health Rankings for Kansas (clickable map)	http://kic.kdheks.gov/OHA/ranking.html	The University of Wisconsin Population Health Institute maintains the National County Health Rankings. The first year for the rankings was 2010. (UW)
KIC FastStats - Kansas Statistical Abstract County Reports	http://kic.kdheks.gov/OHA/ksa2.html	The University of Kansas Institute for Policy and Social Research prepares the abstract, a compilation of a wide range of statistics about Kansas Counties. More is available at http://www.ku.edu/pri/ksdata/esum/ . (KU-IPSR)
KIC FastStats - Kansas Agricultural Census Profiles (clickable map)	http://kic.kdheks.gov/OHA/agcensus.html	The U.S. Department of Agriculture prepared county profiles based on the 2012 Census of Agriculture. The data include information on number of farms, value of products sold, and average age of the principal operator. (USDA)
KIC FastStats - Kansas Single-County IRS Migration Profile (clickable map)	http://kic.kdheks.gov/OHA/migrtn.html	Missouri Census Data Center prepares a migration profile with data regarding movement into and out of a county based on tracking movement reflected in 2008-2009 IRS tax returns. (IRS)
KIC FastStats – Toxic Release Inventory	http://kic.kdheks.gov/OHA/toxicchmcrls.html	TRI (Toxic Release Inventory) tracks the management of certain toxic chemicals that may pose a threat to human health and the environment. U.S. facilities in different industry sectors must report annually how much of each chemical is released to the environment and/or managed through recycling, energy recovery and treatment. (EPA)
Census Quick Facts (clickable map)	https://www.census.gov/quickfacts/fact/map/US/PST045219	This Census Bureau map enables users to access information about their county. (USCB)
Kansas Stream and Lake Water Quality Monitoring reports	https://maps.kdhe.state.ks.us/kswatermonitor/	The KDHE Bureau of Environmental Fields Services monitors water quality in streams and posts the findings into this online tool. Water quality reports can be reviewed for monitoring stations in the state. (KDHE)
Kansas County and Regional BRFSS data	http://www.kdheks.gov/brfss/index.html	Kansas Behavior Risk Factor Surveillance Program (KDHE)
Kansas Cancer Registry	http://www.kumc.edu/kcr/	Cancer incidence data. University of Kansas Medical Center maintains the Kansas Cancer Registry on behalf of KDHE (KUMC).
Solid Waste Database	http://public1.kdhe.state.ks.us/Landfills/Landfills.nsf?Opendatabase	The database consists of the most frequently requested solid waste information.
Storage Tank Database	http://www.kdheks.gov/tanks/download.html	Documents for Presto #25 Reports Lawrence KS, Information for Storage Tank Owners, Owner/Compliance Forms, UST Contractors and Tightness Testers, and Contractor Forms can all be found here. (KDHE)

American Community Survey and Census Estimates	https://www.census.gov/programs-surveys/acs	The U.S. Census maintains a database of information from the American Community Survey. This database can be used for the creation of custom statistical tables for states, counties and smaller jurisdictions.
County-level Communities that Care Statistics	https://kctcdata.org/	The Greenbush Education Service Center conducts the Communities That Care program. CTC is a convenience survey of 6th, 8th, 10th, and 12th graders. Statewide the participation rate is about 60% but may be higher in some counties.
State and County Kids Count statistics	https://www.kac.org/2020_county_fact_sheets	The Annie E. Casey Foundation compiles the information from statistics reported by public agencies. (Casey Foundation)
Popular baby names in Kansas	http://www.ssa.gov/oact/babynames/	The Social Security Administration prepares reports on popular baby names by state. (SSA)
Small Area Income and Poverty Estimates	http://www.census.gov/programs-surveys/saipe.html	U.S. Census Bureau estimates on poverty and income by state, county, and population group. (USCB)
Small Area Health Insurance Estimates	http://www.census.gov/programs-surveys/sahie.html	U.S. Census Bureau estimates the number of uninsured individuals by state, county, and population group. (USCB)
State-level health and social determinant statistics	http://www.statehealthfacts.org/profileglance.jsp?rgn=18	Selected state statistics are compiled and reported in a profile by the Kaiser Family Foundation. (Kaiser Foundation)
National Vital Statistics	https://www.cdc.gov/nchs/nvss/index.htm	Vital Statistics Summaries compiled by the National Center for Health Statistics. Provides state data and suppresses counts when population is too small for counties. (CDC/NCHS)
National Survey of Children's Health	http://childhealthdata.org/learn/NSCH	The National Survey of Children's Health (NSCH) touches on multiple, intersecting aspects of children's lives. The survey, conducted by Child and Adolescent Health Measurement Initiative (CAHMI) includes physical and mental health status, access to quality health care, as well as information on the child's family, neighborhood and social context. (CAHMI/HRSA)
Online Atlas HIV STD TB Surveillance Data	http://gis.cdc.gov/grasp/nchhstpatlas/main.html?value=atlas	The National Center for HIV/AIDS, Viral Hepatitis, STD, and TB Prevention (NCHHSTP) Atlas is an online, interactive tool that provides access to more than 10 years of the latest HIV, STD, TB, and viral hepatitis surveillance data available. Users can customize national maps, graphs, and tables for their state or county. With the advanced query function, users can more easily compare diseases, areas, and populations. (CDC)
Medical Expenditure Panel Survey (MEPS)	http://meps.ahrq.gov/mepsweb/data_stats/download_data_files.jsp	The Agency for Healthcare Research and Quality conducts MEPS. It began in 1996, is a set of large-scale surveys of families and individuals, their medical providers (doctors, hospitals, pharmacies, etc.), and employers across the United States. MEPS collects data on the specific health services that Americans use, how frequently they use them, the cost of these services, and how they are paid for, as well as data on the cost, scope, and breadth of health insurance held by and available to U.S. workers. (AHRQ)
Bureau of Labor Statistics Databases	http://www.bls.gov/data/	BLS maintains the comprehensive site as a resource for research analyzing labor statistics (BLS)
Community Commons	http://www.communitycommons.org/	Community Commons is a data and mapping tool. Information, much of it at county or lower geographic levels can be mapped or used in a report. (Advancing the Movement and IP3)

U.S. Environmental Protection Agency Water Quality Assessment	https://www.epa.gov/hwp	The EPA maintains data on water quality results from streams and lakes, grouped by Kansas watershed (EPA)
U.S. Environmental Protection Agency Hazardous Waste Sites (CERCLIS)	http://cumulis.epa.gov/supercpad/cursites/srchsites.cfm	The EPA maintains information on hazardous waste sites in a database called CERCLIS that can be searched by site or county (EPA)
U.S. Environmental Protection Agency – Toxic Release Inventory	https://www.epa.gov/toxics-release-inventory-tri-program	The EPA maintains an online tool for accessing information about toxic chemicals maintained in counties as well as other downloadable data. (EPA)
Wide-ranging Online Data for Epidemiologic Research (WONDER)	http://wonder.cdc.gov/	WONDER includes a variety of online databases many of which include county-level information. Users will need to create a query to obtain results. (CDC)
Centers for Disease Control and Prevention Survey and Data Collection Summary	http://www.cdc.gov/nchs/surveys.htm	CDC and the National Center for Health Statistics conduct several national surveys that provide useful public health statistics. Few of the surveys can provide state level statistics. Some data systems may produce state and local statistics. (CDC)
BRFSS - Centers for Disease Control and Prevention	http://www.cdc.gov/brfss	National Statistics from the Behavioral Risk Factor Surveillance System. (CDC)
Centers for Disease Control and Prevention Data and Statistics	http://www.cdc.gov/scientific.htm	Research, Statistics, Data & Systems information for Centers for Disease Control and Prevention. (CDC)
County Health Rankings - Kansas	https://www.countyhealthrankings.org/app/kansas/2021/overview	Kansas Overall Rankings in Health Outcomes and Overall Rankings in Health Factors.
NCHS National Vital Statistics System (NVSS)	https://www.cdc.gov/nchs/nvss/index.htm	NVSS is a tool used for quick access to national vital statistics.
Centers for Medicare and Medicaid Studies - Data and Statistics	https://www.cms.gov/Research-Statistics-Data-and-Systems/Research-Statistics-Data-and-Systems?redirect=/home/rsds.asp	Research, Statistics, Data & Systems information for Centers for Medicare and Medicaid Services. (CMS)
NCHS – FASTATS	http://www.cdc.gov/nchs/fastats/Default.htm	FastStat site arranges statistics on topics of public health importance.
U.S. Census Bureau – TIGER	https://tigerweb.geo.census.gov/tigerweb/	TIGER stands for Topologically Integrated Geographic Encoding and Referencing. The database consists of features such as roads, railroads, rivers, as well as legal and statistical geographic areas. (USCB)
AMA Physician-Related Data Resources	https://www.ama-assn.org/practice-management/masterfile/ama-physician-masterfile	American Medical Association collects and maintains physician data. (AMA)
Bureau of Labor Statistics	http://www.bls.gov/	BLS is the federal agency responsible for reporting working conditions, price changes, and labor market activity in the economy. (BLS)
The Dartmouth Atlas of Health Care	http://www.dartmouthatlas.org	Comprehensive information and analysis about national, regional, and local markets, as well as individual hospitals and their affiliated physicians used to improve health and health systems across America. (Dartmouth)
Missouri Census Data Center	http://mcdc.missouri.edu/	MCDC consists of reports and data regarding economic and demographic data for Missouri. (MCDC)
Missouri Census Data Center - Application Links for Kansas	https://mcdc.missouri.edu/applications/applinks/index.php?l=050&s=20	Data links for Kansas. MCDC)
Kansas Institute for Policy and Social Research	http://www.ipsr.ku.edu	IPSR is a group of social scientists that research topics on economics, education, environmental studies, geography, political science, public administration, social welfare, sociology, and urban planning.
U.S. Census Bureau - American Factfinder	https://data.census.gov/cedsci/	Fast community facts can be found by searching a state, county, city, town, or zip code.

U.S. Office of Minority Health	https://www.minorityhealth.hhs.gov/omh/browse.aspx?lvl=2&lvlid=26	The Compendium is a resource that compiles in one place descriptions of and links to 132 public datasets and resources that include information about health conditions and other factors that impact the health of minority populations.
Kansas State Department of Education K-12 Reports	http://datacentral.ksde.org/report_gen.aspx	School/district addresses, email addresses, homepage addresses, administrators, enrollment, dropouts, graduates, staff, vocational education enrollment, violence, crime, suspensions, expulsions, attendance rate, advanced science, advanced math, algebraic mastery, schedule, student improvement plans, staff development, student satisfaction, salaries, certified teachers, noncertified teachers, inclement weather dates, and accreditation information for any county, organization, or school in the state of Kansas
National Center for Health Statistics (NCHS)	http://www.cdc.gov/nchs/hus/index.htm	The NCHS provides reports on the health status of the U.S. from the Department of Health and Human Services. Home to <i>Health, United States</i> , which contains relevant health data from federal, private, and global sources. (NCHS)

Static Reports and Publications

Published reports and publications contain statistics about Kansas and its counties or information helpful in assessment and planning.

KDHE Data and Reports	http://www.kdheks.gov/data_reports_stats.htm	KDHE prepares a variety of public health reports and statistics which are available a common portal or from within individual bureau web pages. (KDHE)
KIC Fast Stats Selected Annual Tables	http://kic.kdheks.gov/OHA/anntable17.html	KDHE produces 25 selected tables of vital statistics information available by county in PDF and Excel formats. (KDHE)
Kansas Selected Annual Summary Tables	http://www.kdheks.gov/phi/	KDHE produces a spreadsheet of all tables with county level statistics from the Annual Summary of Vital Statistics, beginning with 2010. (KDHE)
Kansas WIC Pediatric and Pregnancy Nutrition Statistics	http://www.kansaswic.org/kansas_WIC/pediatric_and_pregnancy_nutrition_surveillance.html	KDHE obtains data from the U.S. Center for Disease Control and Prevention on WIC program participation and demographics in the form of PEDS and PNSS reports. (KDHE)
Kansas HIV – AIDS Statistics	http://www.kdheks.gov/sti_hiv/hiv_std_update.html	The KDHE HIV/AIDS program prepares statewide statistics on cases and infections reported. (KDHE)
Kansas STI Statistics	http://www.kdheks.gov/sti_hiv/sti_reports.htm	The KDHE STI program prepares statewide statistics on sexually transmitted diseases. (KDHE)
Kansas TB Statistics	http://www.kdheks.gov/tb/statistical_information.html	The KDHE TB program collects and maintains statistics on TB infections reported in Kansas. (KDHE)
Kansas Injury Statistics	http://www.kdheks.gov/idp/core_injury.html	The KDHE Injury and Disability Prevention Program reports on injury statistics in the state. (KDHE)
Kansas Retrospective Immunization Survey Statistics	http://www.kdheks.gov/immunize/retro_survey.html	KDHE prepares an annual report after surveying immunization status of children entering Kindergarten. County level statistics are included. (KDHE)
Kansas Directories of Licensed Health Care Facilities	http://www.kdheks.gov/bhfr/fac_list/index.html	KDHE compiles a directory of the facilities regulated by the department. (KDHE)
Kansas Air Emissions Inventory	https://www.kdheks.gov/bar/air-monitor/airdata.html	KDHE maintains an air emissions inventory from which data and statistics can be accessed. (KDHE)
Kansas Underground/Aboveground Storage Tank Database	http://www.kdheks.gov/tanks/download/astf_db.xls	The KDHE Bureau of Environmental Remediation maintains a database of storage tanks to prevent environmental contamination from endangering public health. (KDHE)
Kansas Public Water Supply Annual Compliance Reports	http://www.kdheks.gov/pws/monitoringcompliance/annualcompliancereports.html	The KDHE Public Water Supply program monitors drinking water, preparing an annual report on violations. (KDHE)
Kansas Medicaid Data Reports	http://www.kdheks.gov/hcf/medicaid_reports/default.htm	KDHE prepares state level statistics on Medicaid and Healthwave participation in Kansas (KDHE)
KDHE Medicaid Data Reports	http://www.kdheks.gov/hcf/medicaid_reports/default.htm	Routine reports on Medicaid expenditures. (KDHE)
Kansas Maternal and Child Health Biennial Summary	http://www.kdheks.gov/bfh/download/MCH_2012_Biennial_Summary.pdf	Descriptive Epidemiology Report prepared by the Bureau of Family Health (KDHE).
Infectious Disease Statistics	http://www.kdheks.gov/epi/annual_summary.htm	1992-2013 Annual Infectious Disease Summaries. (KDHE)

Immunization Coverage Survey Results	http://www.kdheks.gov/immunize/retro_survey.html	2000-2013 Retrospective Immunization Coverage Survey of Kindergarten Students, capturing coverage levels at the age of 2 years. (KDHE)
Healthy Kansans 2030	https://www.kdheks.gov/cpm/download/Healthy_Kansans_2030.pdf	State health improvement plan conducted to improve the health and well-being of all Kansas. (KDHE)
Kansas State Board of Nursing Annual Reports	https://ksbn.kansas.gov/annual-report/	State statistics are a part of this annual report of the agency that licenses nurses in Kansas. (KSBN)
Kansas Bureau of Investigation (KBI) Crime Statistics	http://www.kansas.gov/kbi/stats/stats_crime.shtml	KBI collects and maintains statistics on Kansas crime. Information from this report is used in Kansas Health Matters. (KBI)
Kansas Bureau of Investigation (KBI) Domestic Violence Report	https://www.kansas.gov/kbi/stats/docs/pdf/DVStalking%20Rape%202019.pdf	KBI publishes a report on domestic violence activities in the state. (KBI)
State Child Death Review Board Reports	http://ag.ks.gov/about-the-office/affiliated-orgs/scdrb	The State Child Death Review Board investigates all deaths occurring to persons under the age of 18. They issue annual reports on their findings. (SCDRB)
KDADS Addiction and Prevention Services Reports	http://www.kdads.ks.gov/provider-home/providers/provider-reports	Kansas Department for Aging and Disability Services maintains reports on addiction and prevention services. (KDADS)
Department for Children and Families Monthly Caseload Detail Reports	http://www.dcf.ks.gov/services/ees/Pages/EEReports.aspx	Links to various reports, county packets, public assistance reports, and other program activities. (DCF)
Department for Children and Families - County Packets	http://www.dcf.ks.gov/Agency/Pages/County-Packets.aspx	County packet reports provide countywide, regional, and statewide data for various SRS programs. The reports show expenditure and persons-served data for a full state fiscal year. (DCF)
K-12 Education Reports - Kansas State Department of Education	http://www.ksde.org/Default.aspx?tabid=223	Parents as Teachers are a program designed to help parents and guardians understand healthy child development by providing knowledge and resources. (KSDE)
U.S. Census Bureau - County Business Patterns	https://www.census.gov/programs-surveys/cbp.html	CBP is an annual series that provides subnational economic data by industry. (USCB)
Federal Poverty Statistics	https://www.census.gov/topics/income-poverty/poverty.html	The U.S. Census Bureau reports statistics related to persons in poverty. (USCB)
Youth Risk Behavior Surveillance System	http://www.cdc.gov/HealthyYouth/yrbs/index.htm	YRBS manages health risk behaviors that contribute to unintentional injuries and violence, sexual behaviors that contribute to unintended pregnancy, sexually transmitted diseases, HIV infection, alcohol and other drug use, tobacco use, unhealthy dietary behaviors, obesity, asthma, and inadequate physical activity. (CDC)
Behavioral Risk Factor Surveillance System (BRFSS) State Level statistics	http://www.cdc.gov/brfss/	National Center for Chronic Disease Prevention & Health Promotion provides state level BRFSS statistics. (CDC)
Federal MUAs and MUPs medically underserved areas and populations	http://muafind.hrsa.gov/	The Health Resources and Services Administration maintain a database that provides information on Medically Underserved Areas/Populations in Kansas counties. (HRSA)
Federal HPSAs (federally designated physician shortage areas)	http://hpsafind.hrsa.gov/	The Health Resources and Services Administration maintain a database of designations Health Professional Shortage Areas (HPSAs) that have shortages of primary medical care, dental or mental health providers. (HRSA)
County Profiles	https://data.hrsa.gov/geo	Preformatted Reports for counties can be conducted with this tool. (HRSA)
Federal Poverty Guidelines, Research, and Measurement	https://aspe.hhs.gov/topics/poverty-economic-mobility/poverty-guidelines	The Assistant Secretary for Planning and Evaluation at the Department of Health and Human Services maintains information on poverty guidelines. (DHHS)

Trends in Health and Aging (NCHS)	https://search.cdc.gov/search/index.html?query=Trends+in+Health+and+Aging&sitelimit=NCHS&utf8=%E2%9C%93&affiliate=cdc-main	Healthy aging data can be viewed by each state; the data includes topics on health & well-being, screenings and vaccines, and mental health. (NCHS)
Missouri Census Data Center - Summary File 3 for Kansas	https://mcdc.missouri.edu/cgi-bin/broker?_PROGRAM=apps.dp3_2k.sas&st=20	Kansas state data demographic profiles from 2000 US Census. (MCDC)
Child Opportunity Index	http://www.diversitydatakids.org/	A comprehensive information system to monitor the state of wellbeing, diversity, opportunity and equity for U.S. children. (Brandeis)
Kansas Hospital Association STAT Report	http://www.kha-net.org/DataProductsandServices/STAT/	The Kansas Hospital Association reports annually on the activities of hospitals in the state. (KHA)
Kansas Action for Children Health Profiles	http://www.kac.org	Founded in 1979, KAC promotes health, education and economic policy, and lives of families with children in the state of Kansas. (KAC)
National Survey of Children's Health – Data Resource Center for Child and Adolescent Health	https://www.childhealthdata.org/	Contains child and adolescent health statistics, mostly at state level (NSCH)
Kansas State Health Facts	https://www.kff.org/statedata/?state=ks	Kaiser State Health Facts reports state statistics on subjects that include: Demographics and the Economy, Health Costs & Budgets, Health Coverage & Uninsured, Health Insurance & Managed Care Health Reform, Health status, HIV/AIDS, Medicaid & CHIP, Medicare, Minority health, Providers & Service Use, and Women's Health. (Kaiser)
State Insurance Coverage Initiatives by State	http://www.statecoverage.org/coverage/kansas	Robert Wood Johnson Foundation reports on State health coverage statistics by selecting a state. (RWJF)

General Resources

The items listed below represent useful resources for public health agencies and hospitals engaged in community health needs assessment and health improvement planning.

Kansas Dept. of Health and Environment (KDHE)	http://www.kdheks.gov	The Kansas Department of Health and Environment provides information about public health, environment, health care finance, laboratories and health news throughout the state of Kansas. (KDHE)
Ten Essential Services	http://www.kdheks.gov/olrh/ImprovingPublicHealthInKansas.htm	KDHE provide resources to local health departments on the 10 essential public health services and training activities for their staff. (KDHE)
Directory of Local Health Departments and Services	http://www.kdheks.gov/olrh/download/health_directory.pdf	KDHE maintains a directory of local health departments, key staff and other public health resources. (KDHE)
Blue Ribbon Panel on Infant Mortality	https://www.kdheks.gov/phi/IMR/2019_IMR_Report.pdf	KDHE receives advice on how to address the infant mortality problem from the Blue Ribbon Panel. The site is a central repository of information and statistics related to infant mortality. (KDHE)
Income Guidelines for Federal Poverty Levels	http://www.kdheks.gov/shcn/income_guidelines.htm	Posted by the KDHE Bureau of Community Health Systems using federal information. Each year BCHS develops a table containing the annual, monthly, and hourly income ranges by household size for the following categories: At or below 100% of Federal Poverty Level (FPL) Between 100 and 150% FPL Between 150 and 175% FPL Between 175 and 200% FPL At or above 200% FPL (KDHE)
Kansas MCH Five-year Needs Assessment	https://www.kdheks.gov/c-f/downloads/2025_Title_V_Report_DIGITAL.pdf	The Report is a five-year needs assessment, referred to as MCH2015 because it covers the period of federal fiscal years 2006 to 2015, and has resulted in an identification of priority needs for the maternal and child health population. (KDHE)
Selected Maps of Kansas regions for public health purposes	http://kic.kdheks.gov/OHA/ksmap.html	These maps display counties in various groupings. Included are Kansas peer group counties, and the Kansas Health Preparedness regions – formerly known as the Kansas bioterrorism regions. (KDHE)
Kansas Public Health Directory	http://www.kdheks.gov/olrh/download/health_directory.pdf	Director of local health departments in Kansas and public health programs (KDHE)
Kansas Grant Management System	https://khap2.kdhe.state.ks.us/KGMS/Default.aspx	This site gives information on grants provided by KDHE and other organizations. (KDHE)
Local and Rural Health Data Sources	http://www.kdheks.gov/olrh/phdrlinks.htm	Population health data is used to address the specific health needs of the community. (KDHE)

Water Quality Monitoring	http://www.kdheks.gov/befs/tech_svcs_section.html	The Monitoring and Analysis Unit manages water quality conditions in streams, publicly owned lakes, and wetlands in Kansas. This unit also identifies potential risks to natural resources resulting from the unauthorized release of pollutants to the waters of the state. (KDHE)
Local Health Department Directory	http://www.kdheks.gov/olrh/download/health_directory.pdf	Kansas Public Health Directory that includes local health departments, health officers, and medical consultants. (KDHE)
Air Quality Monitoring	http://www.kdheks.gov/bar/index.html	The Bureau of Air is designed to help protect the public and environment from air pollution. (KDHE)
Primary Care Health Professional Underserved Areas Report Kansas	http://www.kdheks.gov/olrh/SD_overview.htm	Agency report of health professional underserved areas in Kansas (KDHE)
KS Train	https://www.train.org/ks/home	KDHE maintains KS Train to support the training needs for health department and others in the health field. Training on community health assessment topics is available. (KDHE)
KU Community Toolbox	http://ctb.ku.edu/en/default.aspx	Operated by the University of Kansas Work Group for Community Health and Development this site is a nationally recognized resource on improving community health. Toolbox material is referenced in Kansas Health Matters. (KU)
The Kansas Board of Healing Arts	http://www.ksbha.org/	Information about the healing arts and licensing status of medical providers in Kansas. (KBHA)
Official Website for Searching U.S. Government	http://www.firstgov.gov	Federal government website that provides information and resources for benefits, grants, loans, mortgages, unclaimed money, taxes, jobs, training, education, passports, health insurance, education and food safety. (ISA.gov)
U.S. Government Open Data	https://www.data.gov/	Data.gov provides federal data, tools, and resources to conduct research. (Data.gov)
HealthData.gov	http://healthdata.gov/	HealthData.gov is a wide-ranging website that dedicated to making high value health data more accessible to entrepreneurs, researchers, and policy makers in the hopes of better health outcomes for all. (DHHS)
U.S. Department of Health and Human Services	http://www.hhs.gov	Protects the health of all Americans and provides essential human services. (DHHS)
Healthy People 2020	http://www.health.gov/healthypeople	Launched in December 2010 by HHS, Healthy People 2020 is a program used to promote national health development and increase knowledge of preventable diseases. (DHHS)
Healthfinder	https://health.gov/myhealthfinder	Federal Government website that provides reliable health information for maintaining health and promoting healthier lifestyles. (DHHS)
National Health Information Center	http://www.health.gov/nhic	NHIC supports public health education and promotion by maintaining a calendar of National Health Observances. NHIC also connects health professionals and consumers to organizations that can best answer their questions by providing up-to-date contact information for the most accurate resources. (DHHS)
Administration on Aging	https://acl.gov/about-acl/administration-aging	AOA supports older individuals living independently by providing programs funded by the government. AOA provides services like, transportation, adult day care, etc. (DHHS)
Youth Risk Behavior Surveillance System	http://www.cdc.gov/HealthyYouth/yrbs/index.htm	CDC conducts surveys of youth to identify trends in risk behaviors. Statistics are national in nature. (CDC)

U.S. Centers for Disease Control and Prevention (CDC)	http://www.cdc.gov	This is the home page for all the resources, reports, data, and statistics that can be accessed from the U.S. Centers for Disease Control and Prevention. (CDC)
CDC Funding Opportunities	http://www.cdc.gov/od/pgo/funding/grants/foamain.shtm	Procurement and Grants Office (PGO) awards acquisition and assistance actions each year and produces approximately \$11 billion in federal funds. (CDC)
U.S. National Center for Health Statistics	http://www.cdc.gov/nchs/index.htm	This is the home page for all the data and statistics that can be accessed from the National Center for Health Statistics. (NCHS)
Food and Drug Administration (FDA)	http://www.fda.gov	Federal agency responsible for maintaining public health through the regulation and supervision of food safety, tobacco products, dietary supplements, prescription and over-the-counter pharmaceutical drugs, vaccines, biopharmaceuticals, blood transfusions, medical devices, electromagnetic radiation emitting devices, cosmetics, animal foods & feed and veterinary products. (FDA)
Health Resources and Services Administration	http://www.hrsa.gov	Created in 1982, HRSA is an agency that aids in building healthy communities and empowering the health care workforce. (HRSA)
Agency for Healthcare Research and Quality (AHRQ)	http://www.ahrq.gov	AHRQ produces evidence and findings to make health care more accessible and safer. (AHRQ)
Substance Abuse and Mental Health Services Administration (SAMHSA)	http://www.samhsa.gov	SAMHSA is the agency that supports public health advancement in behavioral health. (SAMHSA)
Centers for Medicare and Medicaid Studies	http://www.cms.hhs.gov	Agency established to manage Medicare and Medicaid coverage throughout states. (CMS)
U.S. Census Bureau	http://www.census.gov	Federal Statistical System responsible for producing data about the American people and economy. (USCB)
National Institutes of Health	http://www.nih.gov	Medical research agency in control of biomedical and health related research. (NIH)
NIH Funding Opportunities	http://grants1.nih.gov/grants/oer.htm	NIH grants, policies and operations are administered to help fund biomedical research. (NIH)
U.S. National Library of Medicine	http://www.nlm.nih.gov	Founded in 1836, NLM is the world's largest medical library. NLM provides information services and tools to scientists', health professionals, and the public. (NIH)
MEDLINE on PubMed	https://pubmed.ncbi.nlm.nih.gov/	PubMed provides citations for biomedical literature from MEDLINE, life science journals, and online books. (NIH)
NCQA: National Committee for Quality Assurance	http://www.ncqa.org	Non-profit organization dedicated to improving health care quality. (NCQA)
State Public Health Facts (Trust for America's Health)	https://www.tfah.org/	This site contains state health information regarding population facts, adult health Indicators, child and adolescent Health Indicators, and other public health indicators. (TAH)
National Assoc. of State Medicaid Directors	http://medicaiddirectors.org/	The association represents Medicaid directors in states and is responsible for the administration of the Medicaid program in each state. (NASMD)
Missouri Census Data Center	http://mcdc.missouri.edu/	Maintained by the University of Missouri, this site has a vast amount of census data available for download and several query tools that can be used to generate statistics. (MU)
Health Insurance Coverage Initiatives	http://www.statecoverage.org/	The Robert Wood Johnson Foundation maintains a state by state summary of coverage initiatives. Requires flash player. (RWJF)

Health Disparities Data Collection Toolkit	https://ifdhe.aha.org/hretdisparities/toolkit	The Health Research and Educational Trust (HRET), maintains Web-based toolkit for the effective collection of race, ethnicity, and primary language information by hospitals and other health care providers. Such data are essential for monitoring health care delivery and quality of care by linking to clinical measures and targeting appropriate interventions to specific groups. (HRET)
Kansas City Quality Improvement Consortium	http://www.kcqcic.org/about-kcqcic.aspx	KCQIC is an organization that focuses on improving the quality of health care for Kansas City area residents.
Resource Center for Community Health Assessments and Community Health Improvement Plans	http://www.naccho.org/topics/infrastructure/CHAIP/chachip-online-resource-center.cfm	The National Association of City and County Health Organizations maintain CHA/CHIP resources. These include samples of both documents from other local health departments. Links to other resources are also available. (NACCHO)
Kansas Communities That Care (KCTC)	https://kctcdata.org/	Site contains KCTC Student Survey data for states and counties, Kansas Young Adult Survey data for Kansas, and Kansas Gambling Survey data for the state and region.

Mapping Resources

Various state and federal organizations have created web sites that can present maps. This section groups those sites. The sites may also be mentioned elsewhere in this resource guide. The site providers are solely responsible for the content and interpretation of the information presented.

TIGERweb	http://tigerweb.geo.census.gov/tigerwebmain/TIGERweb_main.html	TIGERweb allows data users to view our TIGER database and even offers a Web Map Service (WMS) for app developers and more advanced GIS users. (USCB)
Census Flows Mapper	https://flowsmapper.geo.census.gov/map.html	The newly released Census Flows Mapper shows county-to-county migration from the American Community Survey 5-year data. (USCB)
The Metropolitan and Micropolitan Area Population viewer	https://www.census.gov/programs-surveys/metro-micro.html	The Metropolitan and Micropolitan Area Population viewer shows 34 characteristics of the population for all metropolitan and micropolitan statistical areas by census tract and how they compare to the nation. (USCB)
Community Commons Maps and Data	http://www.communitycommons.org/collections/Maps-and-Data	Community Commons is a data and mapping tool. Information, much of it at county or lower geographic levels can be mapped or used in a report. (Advancing the Movement and IP3)
Kansas Data Archive Portal Map Tool	http://www.ipsr.ku.edu/ksdata/ksah/portal.shtml	The University of Kansas Institute for Policy and Social Research (IPSR) maintains the Kansas Data Archive Portal. This portal will allow users to explore the data in the Kansas Data Archive. Menus and links below will let you switch from map, trend graph (link in each county popup on map), and table of data. You can select other years, metrics, or browse more data. (KU-IPSR)



Prepared by:
 Kansas Department of Health and Environment – Division of Public Health
 Bureau of Epidemiology and Public Health Informatics – Public Health Informatics
 1000 SW Jackson, Suite 130, Topeka, KS 66612-1354
<http://www.kdheks.gov/phi/index.htm/> <http://kic.kdheks.gov/>
 Click to join our mailing list at <http://eepurl.com/gREV19>
 Our Vision: Healthy Kansans Living in Safe and Sustainable Environments.
 Our Mission: To Protect and Improve the Health and Environment of All Kansans.

Revised: 1 Dec 2016
 785-296-8627 - (Fax) 785-368-7118
 KDHE.HealthStatistics@ks.gov
 \vsda18.docx